



3 Piren Green
ST5 6SX
£165,000



2



1



1



STEPHENSON BROWNE

Located in the highly sought after Heritage Park housing estate in Silverdale, Newcastle, this two-bedroom mid-terrace house offers a perfect blend of comfort and convenience.

Just a short stroll from a lovely park and close to local amenities, this property is ideal for those seeking a vibrant community atmosphere.

Upon arrival, you will find off-road parking for one vehicle, ensuring ease of access. Stepping inside, you are welcomed by a spacious hallway that features a handy storage cupboard under the stairs, perfect for stowing away coats, shoes, and other essentials.

The modern kitchen is well-equipped, providing ample space for a fridge freezer and washing machine, along with a gas cooker for your culinary adventures. At the rear of the property, the lounge/dining room is a bright and inviting space, enhanced by French doors that open out to the garden, seamlessly blending indoor and outdoor living. The garden itself boasts a patio area and a grassy section, enclosed by a wooden fence that offers privacy and security.

Venturing upstairs, you will discover both bedrooms. The first bedroom is generously sized and features large built-in wardrobes that stretch along one wall, providing plenty of storage. The family bathroom is thoughtfully designed, complete with a bath that includes a built-in shower, a toilet, and a sink. The second bedroom is also a good size, comfortably accommodating a double bed, and includes access to a Airing Cupboard, offering additional storage options.

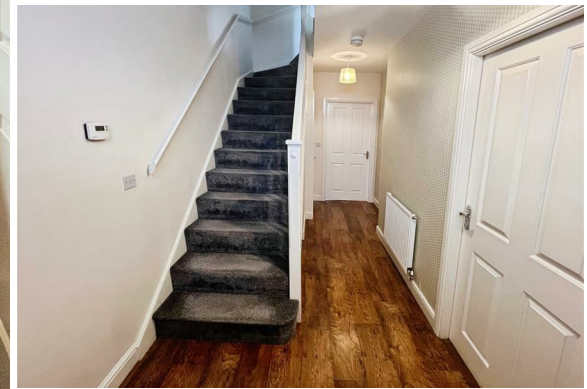
This property is a wonderful opportunity for anyone looking to settle in a friendly neighbourhood with all the necessary amenities at hand. Don't miss your chance to make this charming house your new home.

Get in Touch with Stephenson Browne today to arrange a viewing!

Council tax band- B

Council- Newcastle-Under-Lyme

Tenure- Freehold



Ground Floor

Hallway

6'5" x 15'9"

Lounge

13'8" x 12'7"

Understairs Storage

5'0" x 2'10"

W.C.

3'3" x 5'10"

Lounge/Diner

13'8" x 12'7"

First Floor

Bedroom One

11'3" x 13'8"

Bedroom two

9'9" x 10'6"

Airing Cupboard

7'2" x 3'6"

Bathroom

7'5" x 5'10"

AML Disclosure

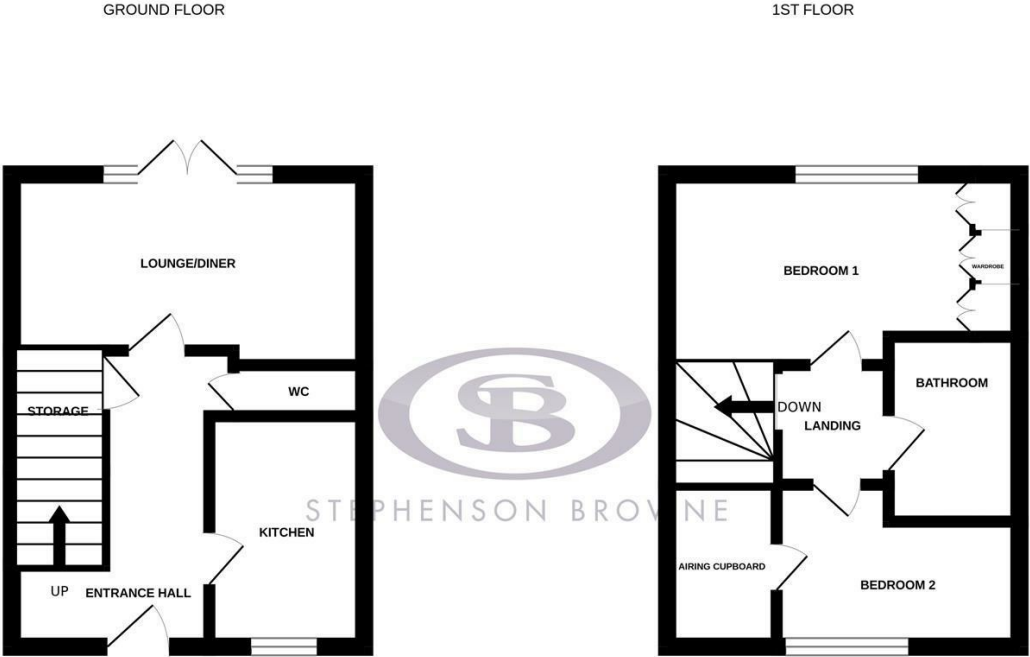
Agents are required by law to conduct Anti-Money Laundering checks on all those buying a property. Stephenson Browne charge £49.99 plus VAT for an AML check per purchase transaction . This is a non-refundable fee. The charges cover the cost of obtaining relevant data, any manual checks that are required, and ongoing monitoring. This fee is payable in advance prior to the issuing of a memorandum of sale on the property you are seeking to buy.



- Spacious Entrance Hall
- Cupboard Understairs For Added Storage
- Modern Style Kitchen
- Off-Road Parking For A Car
- French Doors Out To The Garden From The Lounge/Dining Room
- Back Garden Includes A Patio And Grass Area
- Bedroom One Features Large Built In Wardrobe
- The Airing Cupboard In Bedroom Two Provides Additional Storage
- This Mid-Terrace House Is In A Great Location, Close To All Local Amenities

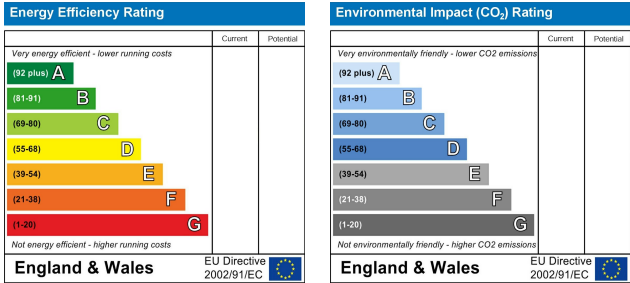


Floor Plan



Whilst every attempt has been made to ensure the accuracy of the floorplan contained here, measurements of doors, windows, rooms and any other items are approximate and no responsibility is taken for any error, omission or mis-statement. This plan is for illustrative purposes only and should be used as such by any prospective purchaser. The services, systems and appliances shown have not been tested and no guarantee as to their operability or efficiency can be given.
Made with Metropix ©2025

Area Map



Viewing

Please contact our Newcastle Office on 01782 625734 if you wish to arrange a viewing appointment or require further information.

NOTICE: Stephenson Browne for themselves and for the vendors or lessors of this property whose agents they are give note that: (1) the particulars are set out as a general guideline only for the guidance of intending purchasers or lessees. and do not constitute, nor constitute part of, an offer or contract; (2) all descriptions, dimensions, references to condition and necessary permissions for use and occupation, and other details are given in good faith and are believed to be correct but any intending purchasers or tenants should not rely on them as statements or representations of fact but must satisfy themselves by inspection or otherwise as to be the correctness of each theme; (3) no person in the employment of Stephenson Browne has any authority to make representation or warranty in relation to this property; (4) fixtures and fittings are subject to a formal list supplied by the vendors solicitor. Referring to: Move with Us Ltd Average fee: £123.64

56 Merrial Street, Newcastle Under Lyme, Staffordshire, ST5 2AW
Telephone: 01782 625734 Email: sandbach@stephensonbrowne.co.uk Website: www.stephensonbrowne.co.uk